

# CareEdge-ESG Assigns ESG Rating in Realty sector



## CARE ESG Ratings Limited (CareEdge-ESG) assigns ESG rating to Oberoi Realty Limited

CARE ESG Ratings Limited (CareEdge-ESG), a SEBI-registered issuer-pays ESG Rating Provider and a wholly owned subsidiary of CARE Ratings Limited, has assigned ESG rating within the Realty sector. Oberoi Realty Limited (Oberoi Realty) has been assigned an ESG rating of CareEdge-ESG 1+ owing to its best-in-class disclosures, policies, and performance.

Oberoi Realty, incorporated in 1998 and headquartered in Mumbai, primarily operates in the real estate development segment, with a diversified portfolio comprising high-end residential developments, Grade-A commercial office spaces, integrated retail destinations, hotels, and social infrastructure projects. The company has a market capitalisation of Rs 53,609 crore<sup>1</sup>. Oberoi Realty is committed to responsible and sustainable development, aligning its operations with best practices in environmental management, occupational health and safety, and quality standards. Through its emphasis on sustainable design, resource efficiency, and community-oriented development, the company continues to strengthen its position as a reliable and forward-looking participant in India's real estate sector.

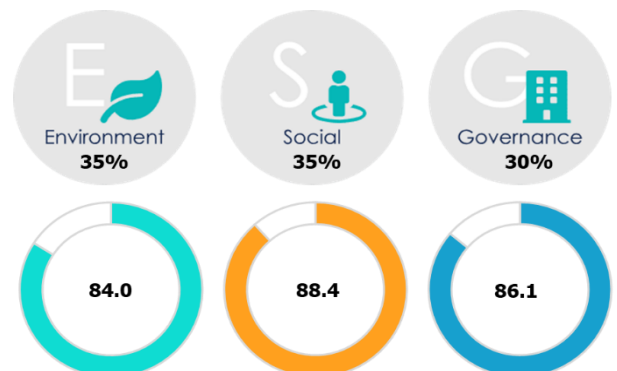
Oberoi Realty received a CareEdge-ESG 1+ rating with an ESG score of 86.2. The ESG rating reflects its leadership position in managing ESG risk through exemplary disclosures, policies, and performance. The rating assigned to Oberoi Realty reflects its commitment to sustainable practices in the real estate sector. Oberoi Realty has demonstrated leadership in its ESG journey, particularly in energy efficiency, waste management, water stewardship, emissions reduction, consumer practices, value chain practices, employee health and safety, human capital development, business ethics, board composition, and ESG governance and oversight.

Please follow the [link](#) for a detailed rationale of Oberoi Realty's ESG rating.

### ESG Score

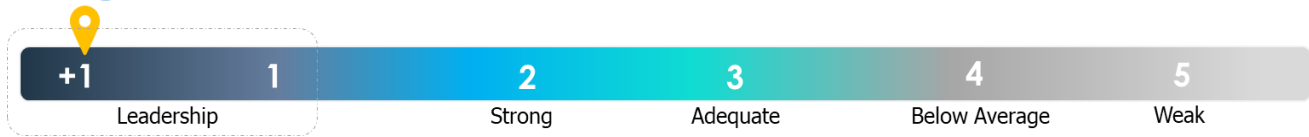


### Pillar Weights and Scores



<sup>1</sup> As of February 02, 2026 (Source: BSE India)

### Rating Scale



CareEdge-ESG’s ratings are derived from a comprehensive analysis of a company’s environmental, social, and governance risks and opportunities. A composite score is calculated based on the company’s performance across key indicators, addressing the significant themes from the three ESG pillars. CareEdge ESG’s methodology comprises approximately 320 indicators across 14 themes for the real estate industry.

Although ESG ratings are relatively new, their importance is rapidly increasing among investors, regulators, and other stakeholders. These ratings help investors make informed decisions by highlighting an entity’s exposure to and management of non-financial risks, as well as its long-term performance objectives and values. Companies with strong ESG credentials often demonstrate superior financial performance and are more successful in attracting a diverse array of investors and raising capital. Moreover, ESG ratings offer valuable insights to rated entities through peer benchmarking and industry medians, allowing them to pinpoint areas for improvement, incentivising sustainable transitions, and encouraging responsible business practices.

**Saumil Daru, Director Finance - Group Chief Financial Officer, Oberoi Realty Limited,** commented, “We are honoured to receive a CareEdge-ESG score of 86.2 and be recognised with the CareEdge-ESG 1+ rating, a Leadership position, reflecting the strength of Oberoi Realty Limited’s governance systems and its structured approach to managing ESG risks across the organisation. This recognition highlights the effectiveness of our policies, internal controls, and transparent disclosures, as well as the growing integration of ESG considerations into decision-making. It reaffirms our commitment to responsible business conduct, accountability, and long-term organisational resilience.”

**Ayashkanta Rout, Head – Sustainability & CSR, Oberoi Realty Limited,** commented, “The CareEdge-ESG score of 86.2 with a CareEdge-ESG 1+ leadership rating reflects the depth and consistency of our sustainability initiatives across the real estate lifecycle. We have embedded ESG into planning, design, construction, and operations through climate-responsive buildings, energy and water efficiency, responsible sourcing, robust safety practices, and structured community development programmes. This recognition validates our focus on best-in-class disclosures, measurable performance, and continuous improvement as we work towards creating resilient assets and long-term positive impact for communities and the environment.”

**Saikat Roy, Chief Executive Officer, CareEdge-ESG,** commented, “Oberoi Realty’s performance in our ESG assessment demonstrates a strong and holistic commitment to sustainable development. The company’s scores materially exceed the industry median across environmental, social and governance parameters, underscoring its focus on responsible growth within a resource-intensive sector. In real estate—where environmental stewardship and community impact are closely interconnected—such leadership sets a meaningful benchmark for the industry.

As capital flows increasingly align with sustainability outcomes, credible ESG ratings are becoming central to how stakeholders evaluate long-term value creation.”

**Nikunj Dube, Chief Ratings Officer, CareEdge-ESG**, commented, “Oberoi Realty’s assessment reflects clear environmental leadership within the realty sector, particularly in areas such as biodiversity stewardship, energy efficiency, water management and waste recovery, all of which are core to both climate mitigation and long-term adaptation. Its strong alignment with green building standards, zero-waste-to-landfill practices, and widespread adoption of zero-liquid discharge demonstrate that sustainability considerations are embedded in operations, strengthening asset-level resilience. On the social front, strengths include workforce stability, comprehensive health insurance coverage, and structured oversight of employee safety and inclusion, reinforcing organisational resilience. From a governance standpoint, robust board functioning, transparent disclosures and formal ESG oversight mechanisms collectively indicate a mature and forward-looking sustainability framework. Taken together, these elements position the company as a sector benchmark for responsible, climate-aware and resilient real estate development.”

#### **About CARE ESG Ratings Limited**

CareEdge-ESG is a category I ERP registered with SEBI and a wholly owned subsidiary of CARE Ratings Limited. With over thirty years of experience as an Indian credit rating agency, CARE Ratings’ move to expand into ESG ratings through its subsidiary would help to enhance investor confidence while promoting accountability and transparency in businesses. Through our comprehensive and nuanced ESG assessments, CareEdge-ESG enables stakeholders to make informed sustainability decisions, fostering positive transformation and enhancing stakeholder trust.

### Analytical Contact

Nikunj Dube	Chief Ratings Officer	Nikunj.dube@careedge.in	+91 – 72191 09995
Satabdi Mohapatra	Assistant Director	Satabdi.mohapatra@careedge.in	+91 – 22 – 6837 4400
Sohani Majumdar	Analyst	Sohani.Majumdar@careedge.in	+91 – 22 – 6837 4400

### Relationship contact

Saikat Roy	Chief Executive Officer	Saikat.Roy@careedge.in	+91 – 84528 15872
------------	-------------------------	------------------------	-------------------

### Media Contact

Mradul Mishra	Media Relations	Mradul.mishra@careedge.in	+91 – 22 – 6754 3596
---------------	-----------------	---------------------------	----------------------

### CARE ESG Ratings Limited

Corporate Office: A Wing – 1102 / 1103, Kanakia Wall Street, Andheri Kurla Road, Chakala, Andheri (East), Mumbai – 400 093  
Phone: +91 - 22 - 6837 4400 | CIN: U66190MH2016PLC285575 | www.careedgeesg.com

Connect:



### About Us:

CareEdge is a knowledge based analytical group that aims to provide superior insights based on technology, data analytics and detailed research. CARE ESG Ratings Limited (CareEdge-ESG) is one of the India's leading ESG rating provider fostering sustainability with ESG insights. With an aim of being a catalyst of change for a sustainable future with the most credible ESG assessments, CareEdge-ESG provides a 360-degree appraisal for the ESG performance benchmarking cum transition enabling ESG risk mitigation and enhanced decision-making capabilities for all stakeholders.

### Disclaimer:

The ratings issued by CARE ESG Ratings Ltd (CareEdge-ESG) are opinions about an issuer, regarding its ESG profile and relative position in managing ESG Risk through disclosures, policies and performance and are not recommendations or suggestion, directly or indirectly to any user, to buy, sell, make or hold any investment, loan or security or to undertake any investment strategy with respect to any investment, loan or security or any issuer. These ratings do not convey suitability of an investment or adequacy of market price for the investor. They shall not form the basis for any investment decisions or analysis and shall not be substitute for the skill, judgement and caution to be exercised by the user of such ratings while making business and investment decisions. CareEdge- ESG gives no representations or warranties regarding the use of these ESG Scores and related materials and/or their fitness for a particular purpose. The agency does not constitute an audit on the rated entity. CareEdge-ESG has based its ESG ratings/score based on information obtained from reliable and credible sources. CARE-ESG does not, however, guarantee the accuracy, adequacy, or completeness of any information and is not responsible for any errors or omissions and the results obtained from the use of such information. CARE ESG reserves the right to change the ESG ratings/ score from time to time in accordance with the methodologies, policies and procedures. CareEdge ESG rating/ scoring report and any related material are meant for informational and reference purpose only and shall not be modified, reverse engineered, reproduced, or distributed, in whole or in part, for commercial purpose, in any form or by any means, or stored in a database or retrieval system. No part of the ESG rating/ score report or any other related material shall be quoted or used without CareEdge ESG's prior written consent, as an input or constituent for deriving results, outputs, inferences which have not been independently verified or validated by CareEdge, for commercial purpose or otherwise. The ESG scores / ratings have been issued by CareEdge ESG for use by users in the jurisdiction of India in accordance with the applicable regulations. Any usage of the ESG rating by the entity rated shall be for internal reference purpose, reference of investors or for usage on the webpage of the rated entity and / or in the annual report or similar usage, however in each case with appropriate source credit to CareEdge ESG. Most entities who are rated by CareEdge-ESG have paid a fee, based on the complexity of rating assignment. CareEdge-ESG or its subsidiaries/associates/promoter may also be involved with other commercial transactions with the entity. CareEdge-ESG is not responsible for any errors and states that it has no financial liability whatsoever to the users of the ratings of CareEdge-ESG.

© 2025 CARE ESG Ratings Limited. All rights reserved.